



## Travis St Lawrence CE Primary School SEND Newsletter

Summer Term 2 2025

# Essential for some, Good for All.

## Welcome

Welcome to the Travis St Lawrence's SEND newsletter.

This half term is always a busy one as children and staff start to prepare for transition to new year groups or new schools. This can be a worrying time for children with SEN and their parents. In school, we offer an enhanced transition package for children, increasing exposure to new areas, new teachers and provide transition materials to support them with this change. We also support our Year 6 leavers with enhanced transition and regular communication with their chosen secondary schools.

Any queries or questions related to SEND can always be sent to [senco@tsl.dsaf.education](mailto:senco@tsl.dsaf.education)

Mrs Gill and Miss Tembey



### **Outside Agency Involvement,**

At Travis, we welcome many outside agencies in school to help support, and give advice to staff and families about the best ways in which we can support our children.

#### **BOSS**

The team work alongside us in school to support children who may experience behavioural difficulties or have an unmet or identified SEMH need.

#### **ASCETs**

The ASCETs team offer support in schools to enhance the learning outcomes for autistic learners or learners with SCLN difficulties.

### **EDUCATION PSYCHOLOGISTS**

Educational Psychologists are registered health professionals who specialise in child development and learning.

#### **WITH ME IN MIND**

A team of Mental Health Support Workers (MHSW) who are based in schools, colleges and academies in Doncaster supporting children and young people with their mental health.



### **OCCUPATIONAL and PHYSICAL THERAPISTS**

Occupational therapists help people overcome challenges with daily activities due to illness, injury or disability. Physiotherapists are healthcare professionals who use movement and exercise to treat various physical conditions and promote recovery.

### **Useful links:**

Doncaster Autism Service

<https://www.autism.org.uk/autism-services-directory/d/doncaster-autism-service>

Doncaster Parent Voice

<https://www.doncasterparentsvoice.co.uk/>

Doncaster Local Offer

<https://www.doncaster.gov.uk/services/schools/local-offer-send>

### **SEN Awareness Days**

June

2-8<sup>th</sup> June

World Heart Rhythm Week

9-15<sup>th</sup> June

Carers' Week

16-22<sup>nd</sup> June

Diabetes Week

16 – 22<sup>nd</sup> June

Learning Disability Week

22 – 28<sup>th</sup> June

Deafblind Awareness Week

July

25<sup>th</sup> July

National Schizophrenia Awareness Day



## It's not a race...it's a journey

### What are.... Sensory Profiles?

A Sensory Profile is a tool used to assess how individuals respond to sensory stimuli in their environment. It helps to understand an individual's unique sensory processing patterns and how these patterns affect their behaviour and participation in daily activities.

#### Purpose:

It helps to identify whether an individual is over-responsive (hypersensitive) or under-responsive (hyposensitive) to certain sensory stimuli or if they have difficulties with sensory discrimination.

#### Key Areas:

Auditory input: sensitivity to sounds, including loudness, frequency and pitch

Visual input: sensitivity to light, brightness and visual patterns

Tactile input: Responses to touch, including pressure, temperature and textiles

Vestibular input: sensitivity to movement and changes in balance

Proprioceptive input: awareness of body position and movement

Olfactory and gustatory input: sensitivity to smells and tastes.

#### Benefits:

By understanding sensory differences in children, we can understand how a person's sensory processing patterns might be affecting their behaviour and learning. We can support children in developing strategies to support individual sensory needs and can identify challenges in behaviour and the best ways to support children with these.

### Famous Person of the month... Warwick Davis



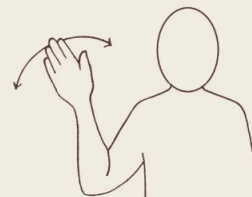
Warwick Davis has Appeared in: Star Wars/ Harry Potter/ Extras/ The Hitchhiker's Guide to the Galaxy/ The Chronicles of Narnia and much more.

When Davis was 11, his grandmother heard a radio advertisement calling for people who were 4 feet (120 cm) tall or shorter to be in Return of the Jedi. To Davis, who was a fan of the Star Wars films, it was a dream come true. During the filming of Return of the Jedi, Mark Hamill bought Davis every Star Wars action figure he did not have. Warwick has had a very successful acting career and continues to do so.

### Makaton Sign of the Month

Makaton is a language support system used by many children and adults with additional needs. It is closely linked to British Sign Language, although it aims to support rather than replace language.

Wave with one or two hands as appropriate



**Goodbye**